



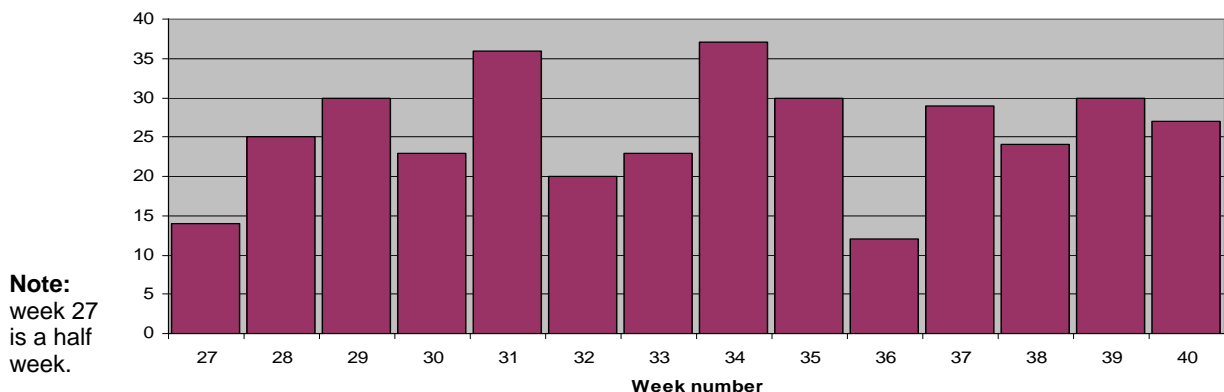
w www.exeterfoodbank.org.uk
e info@exeterfoodbank.org.uk
☎ 0781 822 6524
✉ PO Box 661, Exeter EX4 6JP
 Exeter Food Bank is a registered charity number 1128795 and a company limited by guarantee reg. no. 6718767 in England & Wales

July-Sep 2010 newsletter

Feeding local people..

Numbers of clients have gone up 77% on the previous quarter to a total of 360 over the last 3 months, of which 55 were children. The percentage increase is roughly the same compared to last years numbers over the same months.

Number fed per week



The average number of clients fed per week is almost 26! The reasons vouchers are issued hasn't changed, with benefit delays accounting for 53% of referrals.

We have now exceeded the total number of clients we fed last year and we still have some months to go.

Desperately seeking food..

As you can imagine this has placed an enormous strain on our food stocks and we have had to regularly buy extra food to meet the demand. Now that we are in the Harvest Festival season we are very keen to get as much food as we can to see us through the winter months. The good news is that food is currently pouring in from schools and churches all over the city! Please bear in mind that we cannot store fresh food so we are after tinned or packet food. Last year we collected several tonnes from schools, churches and companies and we are hoping to match or exceed what was collected.

Desperately seeking food..

Our usual items as in short supply:

- UHT milk (semi-skimmed)
- Fruit Juice (long-life)
- Coffee (small jar)
- Tinned meat meals
- Rice (500g)
- Potatoes (tins or instant mash)
- Instant noodle snacks
- Tinned veg. (carrots, peas, sweet corn)
- Pasta sauce
- Custard
- Rice pudding or tinned sponge pudding
- Biscuits

Supermarket collections

Our next supermarket was due to be on Saturday October 9th but given the busyness of this period we have cancelled this one. New collection dates are Thursday 13th and Friday 14th January 2011 between 4-6pm at Sainsbury's Pinhoe.

Food NOT required

We have a surplus of the following foods so please do **not** contribute any of the following: cereals, baked beans or pasta

Thank you..

Thank you to the following who have already contributed very generously to our Harvest collection:

Received so far..

Emmanuel school - 69.6kg – Thanks to John-Marc Bossard and Tom Glazebrook - they did a food collection at the school, then not satisfied with that, they did a couple of fund-raising events and then went out and bought more food! Very enterprising.

Ladysmith Infants - 151 kg
Ladysmith Juniors – 153.6Kg
University ReUse project - 82.1 kg
Belmont Church - 162 kg
St James Church – 212.5Kg

Still to come..

Exeter Junior school, Pinhoe school, St Davids school, St Margarets school and Redhills + more to come.

Regular donors..

Thanks also to our regular donors who continue to generously supply us through out the year and respond to specific food appeals. Sainsbury's Pinhoe customers, Pinhoe Rd Baptist church, Vineyard church, Exwick Community Church, Riverside church, Network church

Looking for new premises..

Our distribution location agreement is due to come to an end at the end of November and we are actively seeking another city centre location to distribute from. You may have spotted the article in the Express and Echo recently – see: <http://www.thisisexeter.co.uk/news/Foodbank-needs-help-families-fed/article-2674477-detail/article.html>

If you are aware of any place that is available for free or very low rent then please contact us.

Help wanted

Anyone interested in occasional food collections and sorting on a regular one-evening-a-month basis please contact Pete Scott on scotts@clara.net.

Hungry? Your neighbour might be!